

# The...liberator<sup>TM</sup>



Hydraulic generator **plus** rescue tool pump in **one compact integrated system**



- **More tool power; more robust**
- **Tool power and AC at **all** engine speeds**
- **Higher reliability**
- **Smaller footprint; more truck compartment space**

**Smart Power and XRT<sup>®</sup>** have teamed up to provide the fire industry with its **first and only** fully integrated hydraulic driven generator **and** hydraulic driven rescue tool system. This combined system uses one PTO to simultaneously produce electricity (10kW, 15kW, 20kW) plus 5000 Watts hydraulic power to **operate 3 rescue tools** at full capacity.

## **Integrated hydraulic rescue tool pump system**

- Unique hydraulic drive system\* provides more rescue tool power than gas or electric motors
- Allows pumper operation simultaneous with extrication and AC power generation
- Two-stage rescue tool pump provides faster extrication operation
- Compatible with all manufacturers' rescue tools; up to 100ft hose / tool
- XRT<sup>®</sup> rescue tool pump bolts directly to the generator
- One hydraulic pump, one hydraulic motor; drives both the generator and XRT<sup>®</sup> pump
- Power to drive up to 3 rescue tools simultaneously (independent of each other)
- Generator and rescue tools can be run at full load; at any engine RPM

## **Space saving design**

- Compact hydraulic gen-set\* footprint (Industry's smallest) saves valuable compartment space
- No additional hydraulic rescue tool pump is required; save compartment space

## **Lower cost and high efficiency**

- Eliminates the need for a larger generator, just to run electric-powered pump
- Requires 40% less power from the vehicle than other electric rescue tool pumps
- Simplified single drive integrated system

## **One PTO port operation**

- Smart Start\* engagement protects both the generator and XRT<sup>®</sup> pump
- Ease of operation; engage just one PTO and you are "scene ready"
- Thru-drive pumps offer ability to run another hydraulic pump from the same PTO

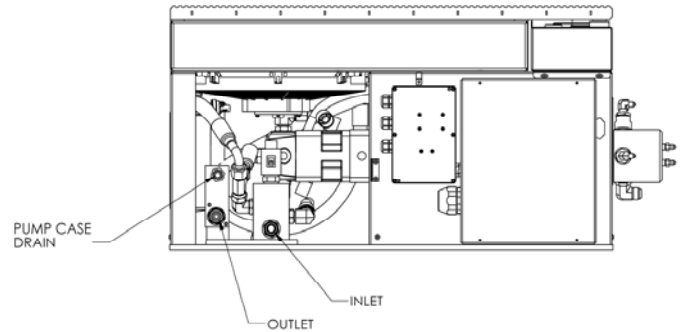
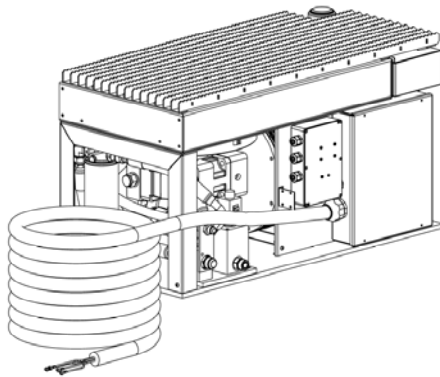
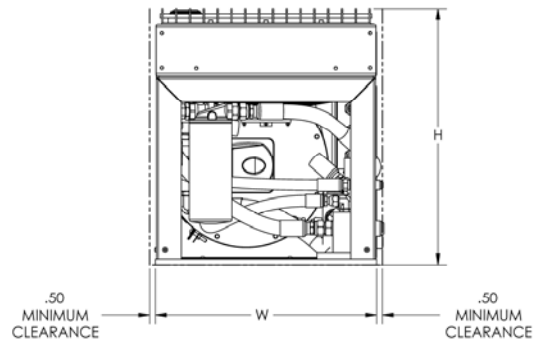
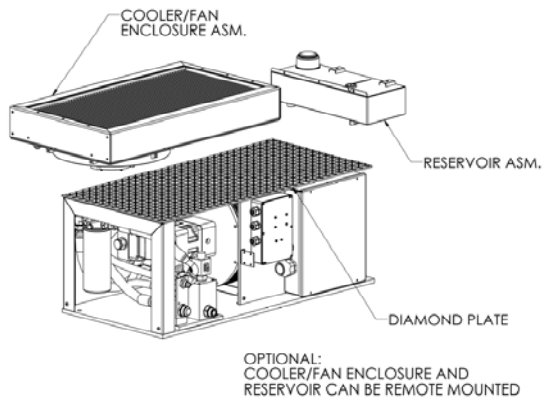
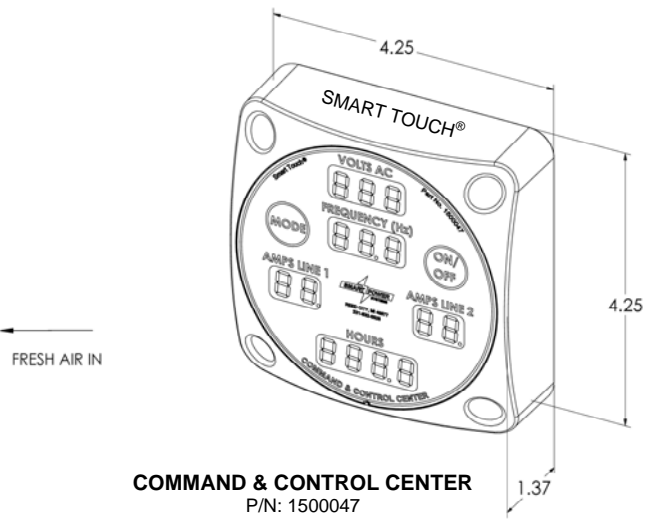
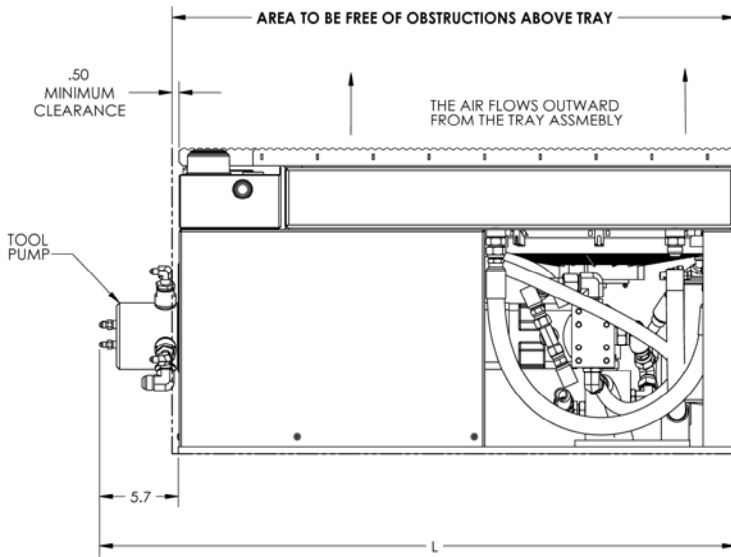
## **Reliable hydraulic generator power source**

- Total **Electronic Control System**\* offers the Industry's highest system control and self-diagnostics
- Trouble-free hydraulically driven clean power source you can rely on
- Rugged tray assembly provides superior component protection
- Automated system protection prevents damage in extreme conditions



Smart Power Systems<sup>®</sup>  
5000 North US-131, Reed City, MI 49677-7922 · (231) 832-5525 · Fax (231) 832-3876 · [sales@smartpower.com](mailto:sales@smartpower.com)  
Smart Power Systems<sup>®</sup> is a Nartron Corporation registered trademark

\*patents 7,053,498; 7,459,800 and others pending



### System specifications

	<b>LI-15</b>	<b>LI-20</b>	<b>LI-25</b>
<b>Model number:</b>	LI-15	LI-20	LI-25
<b>Part number:</b>	3600015	3600020	3600025
<b>AC amps:</b>	83/42	125/62	167/83
<b>Continuous watts:</b>	10000 AC	15000 AC	20000 AC
<b>Peak watts:</b>	12000 AC	16500 AC	22000 AC
<b>Tray weight:</b>	485 lbs.	580 lbs.	715 lbs.
<b>AC volts:</b>	120/240 VAC	120/240 VAC	120/240 VAC
<b>Frequency:</b>	60 Hertz	60 Hertz	60 Hertz
<b>Phase:</b>	Single	Single	Single
<b>Generator speed:</b>	1800 RPM	1800 RPM	1800 RPM
<b>Frame size:</b>	40.5"L x 19"W x 22"H	46"L x 19"W x 22"H	48"L x 19"W x 22"H
<b>Hydraulic pump:</b>	80 cc axial piston with pressure compensation	80 cc axial piston with pressure compensation	80 cc axial piston with pressure compensation
<b>Fluid:</b>	Dexron III	Dexron III	Dexron III
<b>Tool pump:</b>	SP 786 Two-Stage Continuous Duty	SP 786 Two-Stage Continuous Duty	SP 786 Two-Stage Continuous Duty
<b>Tool pressure rating:</b>	5000psi, 10000psi or 10500psi	5000psi, 10000psi or 10500psi	5000psi, 10000psi or 10500psi
<b>Rescue tool fluid:</b>	Phosphate Ester, Mineral fluid or Glycol	Phosphate Ester, Mineral fluid or Glycol	Phosphate Ester, Mineral fluid or Glycol
<b>Number of outputs:</b>	1, 2 or 3 independent ports	1, 2 or 3 independent ports	1, 2 or 3 independent ports